

**BASS
STRING
LEVEL**

SIX

SCALES:

Ab, Eb, Bb, F, C, G, D, A, E

TWO OCTAVES

G-SCALE THREE OCTAVES

LEVEL FOUR

- ___ C scale #104-107
- ___ G scale # 111 - 114
- ___ Reuben And Rachel
- ___ Simandl Exercise # 8
- ___ Irlandis
- ___ D scale # 118 - 121
- ___ Bouree
- ___ A scale # 125 - 128
- ___ Jasiak in "C"
- ___ Chanson Enfantine in "A"
- ___ Bracketed excerpts from London Symphony
- ___ F major #132 - 135
- ___ Simandl exercise #8 in F
- ___ Sakura
- ___ Excerpt from Bacchanale
- ___ Bb scale # 139 - 142
- ___ Sonatina
- ___ Eb scale # 146 - 149
- ___ Page 25 #1 - 3 in Eb
- ___ Allegro WF Bach
- ___ Die Meistersinger in "C"
- ___ Gavotte by Gossec
- ___ Bourree by Handel

SOLOS

LEVEL FIVE

- ___ Intro to Thumb position & Tenor Clef
- ___ Traditional 2 octave Scales
- ___ C ___ G ___ D ___ A ___ E ___ F ___ Bb ___ Eb ___ Ab
- ___ Russian Sailors Dance excerpt
- ___ G major exercise #8
- ___ The Minuet in "D" Major JS Bach
- ___ "D" major exercise #29 & 30
- ___ A major exercise #3
- ___ E major exercise #6 & 7
- ___ Song of the Volga Boatmen in "F"
- ___ Hrabe exercise in Bb
- ___ Simandl exercise #4 in Eb
- ___ Exercise in Ab #3 & #6 next page
- ___ Minuet in "G" JS Bach
- ___ Capuzzi Concerto in "F" 2 pages

LEVEL SIX

- Scale Studies ___ C scale #1 - 5
- ___ Etude No.6 Andante
- ___ G scale #1 - 4
- ___ Etude #25 Risoluto
- ___ D scale # 1 - 4
- ___ A scale # 1 - 3
- ___ Etude in "D" # 33 Maestoso
- ___ Etude in "A" #35 Andante
- ___ E scale #1 - 3
- ___ Etude #61 Allegretto
- ___ F scale #1 - 3
- ___ Etude #12 in "F"
- ___ Bb Scale & Etude #1
- ___ Page 4 exercises in Tenor clef
- ___ Etude #8 in Bb Allegro moderato
- ___ 2 Octave scales ^ Exercises using Treble Clef
- ___ Position Survey
- ___ Konzert in E-Dur Dittersdorf 2 pages
- ___ Concerto by Nanny 3 pages

Two Octave Scales

String Bass

C Major

Musical notation for C Major scale on String Bass. The scale is written on a bass clef staff. The notes are: C2 (0), C3 (1), C4 (2), C5 (0), C6 (1), C7 (2), C8 (4), C9 (0), C10 (1), C11 (2), C12 (4), C13 (1), C14 (3), C15 (4), C16 (1), C17 (3), C18 (2), C19 (3).

G Major

Musical notation for G Major scale on String Bass. The scale is written on a bass clef staff with one sharp (F#). The notes are: G2 (2), G3 (0), G4 (1), G5 (2), G6 (0), G7 (1), G8 (4), G9 (0), G10 (0), G11 (1), G12 (2), G13 (4), G14 (1), G15 (4), G16 (2), G17 (3).

D Major

Musical notation for D Major scale on String Bass. The scale is written on a bass clef staff with two sharps (F# and C#). The notes are: D2 (0), D3 (1), D4 (4), D5 (0), D6 (1), D7 (4), D8 (2), D9 (4), D10 (1), D11 (2), D12 (3), D13 (1), D14 (2), D15 (2), D16 (2), D17 (3).

A Major

Musical notation for A Major scale on String Bass. The scale is written on a bass clef staff with three sharps (F#, C#, and G#). The notes are: A2 (0), A3 (1), A4 (4), A5 (0), A6 (1), A7 (4), A8 (2), A9 (4), A10 (1), A11 (X), A12 (2), A13 (4), A14 (1), A15 (4), A16 (2), A17 (3).

E Major

Musical notation for E Major scale on String Bass. The scale is written on a bass clef staff with four sharps (F#, C#, G#, and D#). The notes are: E2 (0), E3 (1), E4 (4), E5 (0), E6 (1), E7 (4), E8 (2), E9 (4), E10 (1), E11 (X), E12 (2), E13 (4), E14 (1), E15 (4), E16 (2), E17 (4).

x = extension

Pivot
B Major

III II 1/2 II

F Major

1/2 p.

Bb Major

1/2 p.

Eb Major

1/2 p.

Ab Major

Pivot : 1 4 X X 4 X - 1 - 2 4

Db Major

1 4 1 1 4 1 - 2 4

= extension

SCALE STUDIES

Edited by FRED ZIMMERMANN

STRING BASS

OSWALD SCHWABE

C major

(-)

Nº 1.

Nº 2.

Nº 3.

Nº 4.

Nº 5.

*No. 3 should be practiced with the following bowings in all tonalities:

1. etc. 2. etc. 3. etc. 4. etc. 5. etc. 6. etc. 7. etc.

8. etc. 9. etc. 10. etc. 11. etc. 12. etc. 13. etc.

Allegretto.

Musical score for Allegretto, measures 1-5. The score is written in bass clef with a 3/4 time signature. It begins with a dynamic marking of *mf*. The music consists of a single melodic line with various articulations, including slurs and accents. Fingering numbers (1, 2, 3, 4) are indicated above the notes. The piece concludes with a double bar line.

Andante.

Musical score for Andante, measures 6-9. The score is written in bass clef with a 4/4 time signature. It begins with a dynamic marking of *mf*. The music consists of a single melodic line with various articulations, including slurs and accents. Fingering numbers (1, 2, 3, 4, 0) are indicated above the notes. There are handwritten annotations in the score, including a circled 'mf' and a circled 'even' with an arrow pointing to a specific measure. The piece concludes with a double bar line.

G major

Nº 1. 

Nº 2. 






Bowings

Nº 3. 



Nº 4. 



Nº 5. 



Allegro.

24. *mf* *sempre staccato.*

25. *Risoluto.*

A musical staff in bass clef with a key signature of one sharp (F#). It contains a sequence of notes with various slurs and phrasing marks.

Bowings

No 3. A musical staff in bass clef with a key signature of one sharp (F#) and a common time signature (C). It features a series of notes with bowing numbers (1, 4, 0, 1, 4, 1, 2, 4, 2, 4, 1, 4, 0, 1, 2, 1, 0, 4, 1, 4, 2, 4, 1, 0, 4, 1, 1, 4, 1) written above the notes.

A musical staff in bass clef with a key signature of one sharp (F#). It contains a sequence of notes with various slurs and phrasing marks.

No 4. A musical staff in bass clef with a key signature of one sharp (F#) and a 3/4 time signature. It features a series of notes with bowing numbers (1, 4, 0, 1, 4, 1, 2, 4, 2, 4, 1, 4, 0, 1, 2, 2, 1, 0, 4, 1, 4, 2, 4, 1, 0, 4, 1, 1, 4, 1) written above the notes.

A musical staff in bass clef with a key signature of one sharp (F#). It contains a sequence of notes with various slurs and phrasing marks.

No 5. A musical staff in bass clef with a key signature of one sharp (F#) and a common time signature (C). It features a series of notes with bowing numbers (1, 4, 0, 1, 4, 1, 2, 4, 2, 4, 1, 4, 0, 1, 2, 2, 1, 0, 4, 1, 4, 2, 4, 1, 0, 4, 1, 1, 4, 1) written above the notes.

A major

No 1. A musical staff in bass clef with a key signature of one sharp (F#) and a common time signature (C). It features a series of notes with bowing numbers (0, 1, 4, 0, 1, 4, 2, 4, 2, 4, 1, 0, 4, 1, 0) written above the notes.

No 2. A musical staff in bass clef with a key signature of one sharp (F#) and a common time signature (C). It features a series of notes with bowing numbers (0, 1, 4, 0, 1, 4, 1, 1, 4, 2, 4, 1, 4, 2, 3, 2, 4, 1, 4, 2, 4, 1, 1, 4, 1, 0, 4, 1) written above the notes.

A musical staff in bass clef with a key signature of one sharp (F#). It contains a sequence of notes with various slurs and phrasing marks.

A musical staff in bass clef with a key signature of one sharp (F#). It contains a sequence of notes with various slurs and phrasing marks.

Bowings

No 3. A musical staff in bass clef with a key signature of one sharp (F#) and a common time signature (C). It features a series of notes with bowing numbers (0, 1, 4, 0, 1, 4, 1, 1, 4, 2, 4, 1, 4, 0, 1, 2, 1, 0, 4, 1, 4, 2, 4, 1, 1, 4, 1, 0, 4, 1, 0, 4) written above the notes.

A musical staff in bass clef with a key signature of one sharp (F#). It contains a sequence of notes with various slurs and phrasing marks.

TRISTISSIMO.

33.

33.

Piu mosso.

Piu mosso.

A MAJOR.

2
1 1 4

34.

sempre legato.

35.

Andante.

mf

p *rit.*

Allegretto.

61.

61. *Allegretto.*

a tempo.

rall.

Bowings

Nº 3.

Nº 4.

F major

Nº 1.

Nº 2.

Bowings

Nº 3.

Nº 4.

12. Musical staff 1 of exercise 12, bass clef, 6/8 time signature. The staff contains a sequence of eighth notes with fingerings 1 and 4. Chord markings 'A' are placed below the staff.

Musical staff 2 of exercise 12, bass clef, 6/8 time signature. The staff contains a sequence of eighth notes with fingerings 1 and 4. A chord marking 'D' is placed below the staff.

Musical staff 3 of exercise 12, bass clef, 6/8 time signature. The staff contains a sequence of eighth notes with various fingerings including 4, 1, 4, 1, 4, 1, 2, 1, 2, 1, 4, 1.

Musical staff 4 of exercise 12, bass clef, 6/8 time signature. The staff contains a sequence of eighth notes with various fingerings including 4, 2, 1, 3, 1, 0, 2, 3, 1, 2, 0, 4. Chord markings 'B' and 'O' are present.

Musical staff 5 of exercise 12, bass clef, 6/8 time signature. The staff contains a sequence of eighth notes with various fingerings including 3, 2, 1, 1, 0, 0, 4, 3, 1.

Musical staff 6 of exercise 12, bass clef, 6/8 time signature. The staff contains a sequence of eighth notes with various fingerings including 3, 1.

Musical staff 7 of exercise 12, bass clef, 6/8 time signature. The staff contains a sequence of eighth notes with various fingerings including 3, 1.

Musical staff 8 of exercise 12, bass clef, 6/8 time signature. The staff contains a sequence of eighth notes with various fingerings including 3, 1.

13. Musical staff 1 of exercise 13, bass clef, 6/8 time signature. The staff contains a sequence of eighth notes with fingerings 3, 1, 4. Chord markings 'A' are present.

Musical staff 2 of exercise 13, bass clef, 6/8 time signature. The staff contains a sequence of eighth notes with fingerings 2, 1, 4, 4, 1, 4, 1, 2, 4, 4, 1.

Musical staff 3 of exercise 13, bass clef, 6/8 time signature. The staff contains a sequence of eighth notes with various fingerings including 3, 4, 1, 3, 1, 2, 3, 2, 1, 0.

Finger-Exercises and short studies in thumb-position. in combination with the other positions.

Fingerübungen und kleine Etuden im Daumen-einsatz in Verbindung mit den übrigen Lagen.

a.)

Bb major
B dur

All the following scales are to be practised first slowly, gradually (and constantly) increasing the speed.

Auf diese Weise sind alle nachfolgenden Skalen zuerst im langsamen, dann nach und nach im schnelleren Tempo zu üben.

Allegro maestoso.

Etude 1.

Allegro moderato.

8. *f*

mf

f

rit. *ff*

Detailed description: This page contains a musical score for a bass clef instrument, consisting of 8 measures. The tempo is marked 'Allegro moderato'. The score begins with a dynamic marking of *f* (forte). The first measure is a half note chord. The second measure contains a complex rhythmic pattern with eighth notes and a triplet of eighth notes. The third measure features a half note chord with a 'V' (accusato) marking. The fourth measure has a half note chord with a 'V' marking and a '4' below it. The fifth measure starts with a half note chord and a 'mf' (mezzo-forte) dynamic, followed by eighth notes. The sixth measure continues with eighth notes and includes fingerings '1 2 4 2' and '4 4'. The seventh measure has eighth notes with fingerings '1 2 1 4' and a '4' below. The eighth measure features a half note chord with a '2 1 2 4' below. The final measure concludes with a half note chord, a 'rit.' (ritardando) marking, and a 'ff' (fortissimo) dynamic.

5. **1st Pos.** **2nd Pos.** **3rd Pos.** **4th Pos.** **3rd Pos.**

A D G

D A D G D A

6. **3rd Pos.** **4th Pos.** **3rd Pos.**

E A D G

D A E A D G D A E

7. **1st Pos.** **3rd Pos.** **4th Pos.** **3rd Pos.**

A D G D G

D G D A D G D G D G D G D A

8. **1st Pos.** **2nd Pos.** **3rd Pos.** **4th Pos.** **3rd Pos.** **1st Pos.**

A D G D

A D G A D G D A G D A

Position Survey

1st Pos.

2nd Pos.

3rd Pos.

4th Pos.

3rd Pos.

2nd Pos.

1st Pos.


Variations

Konzert in E-Dur

Bearbeitet und herausgegeben von
Franz Tischer-Zeitz

I

Karl Ditters von Dittersdorf
1739-1799

Stimmung: 

Allegro moderato



13 (1) 7

mf

mf

tr (2) *p*

pp *cresc.*

(3) *f* *Flag.* *p*

mf

tr *f*

(4) *tr* *mf* *p*

mf

f

⑤

mf

Flag.
p

f

⑥

mf

⑦

mf *cresc.*

mf

⑧

Flag.
p

mf

cresc. *f*

TRACK
17

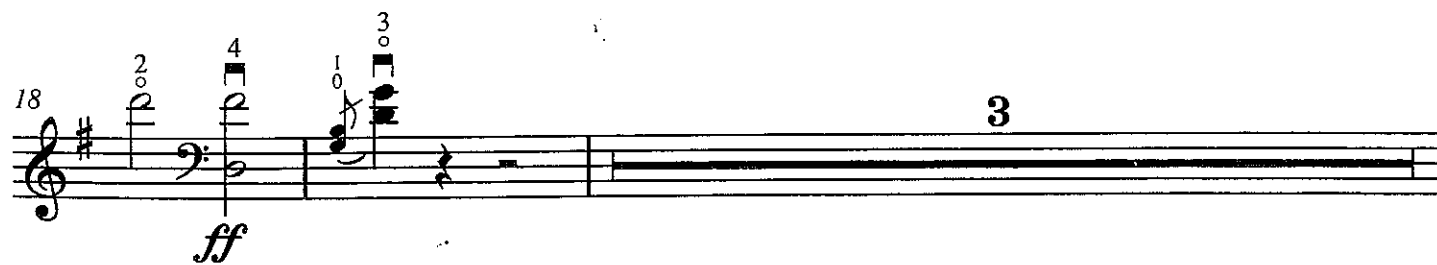
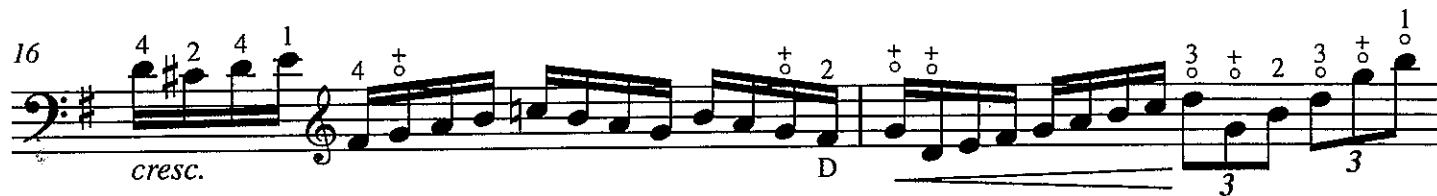
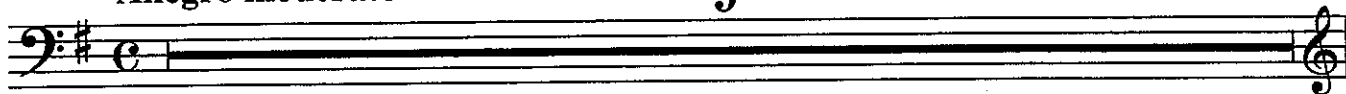
Concerto

(1st Movement)

EDOUARD NANNY
(Attributed to Dragonetti)
Edited by George Vance

I

Allegro moderato ♩ = 104 **9**



23 *a tempo*
mf

26 *dolce*

30 *p*

32 *cresc.*

34

36 *f*

39 *a tempo*
mf

43

D D

45

cresc.

47

6th Pos. D G D

49

A p cresc.

52

cresc.

54

poco rit. A G tr a tempo

58

6 rit.